

LANIER



Lanier MP2553SP MP3353SP

Multifunction B&W

✓ Copier ✓ Printer ✓ Fax ✓ Scanner



MP2553SP

25
ppm
monochrome

MP3353SP

33
ppm
monochrome

personalise your productivity

Your organisation is unique. So is the way you conduct business. So why handle document management the same way everybody else does? Customise the Lanier MP2553SP/MP3353SP to accommodate your unique workflows. These versatile MFPs help you print, copy, share and secure a wider range of documents in more places, more conveniently. Use it as your information portal and connect to cloud services and applications directly from the operation panel. With a host of advanced document management capabilities packed into a space-saving, eco-friendly design, it's ideal for any small office or workgroup looking to streamline workflow and enhance output from creation to finish - at sizes up to A3. Whether it's used as a primary system or as an integral part of the Lanier Managed Document Services (MDS) strategy, this customisable MFP can enhance productivity while reducing total cost of ownership for any organisation.

- Produce up to 33 monochrome prints/copies per minute
- Connect from anywhere using location-free mobile printing
- Simplify workflow, improve productivity without increasing footprint size
- Manage more tasks with flexible media handling
- Sustain cost-effective operations with energy-saving efficiency



customisable everyday convenience work the way you want and how you want

Improve productivity any time, anywhere

Don't let its sleek, compact design fool you. The Lanier MP2553SP/ MP3353SP offers incredible power that demands attention. It recovers from sleep mode in less than 10 seconds and can print up to 33 monochrome pages per minute. With the standard 100-sheet Automatic Reversing Document Feeder (ARDF), users can scan up to 80 colour or monochrome images per minute. Use the internal finisher to add a professional touch to document sets and streamline workflow even more – without adding to the small footprint.



Empower the mobile workforce

Take advantage of wireless technology and bring unprecedented flexibility to the workplace. The Lanier MP2553SP/MP3353SP integrates with Lanier HotSpot Enterprise, so mobile users can print directly to the MFP from laptops, smartphones and tablets without compromising speed, convenience or security. The powerful solution is installed behind your firewall, does not require print drivers for mobile devices and works seamlessly with cost recovery software.



Control workflow efficiency with leading-edge technology

The Lanier MP2553SP/MP3353SP works as smart as you do. Personalise the Home Screen with one-click icons to commonly used tasks, including copying, scanning and faxing. Use optional embedded software such as GlobalScan or third-party vendor software to create custom workflows for your most complicated tasks. Our partnerships with industry-leading technology innovators ensure you can access a large selection of applications for content management and other business-critical tasks directly from the MFP.



Simplify operations

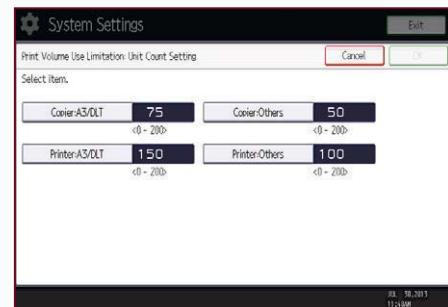
You can quickly see why the Lanier MP2553SP/MP3353SP is easy to use. For misfeeds, the MFP offers easy-to-follow animated guides that help users identify and resolve the source of the problem. Users can tilt the 9-inch (23 cm) control panel screen for easier viewing and more convenient access to system functions. Plus users can preview jobs to ensure accuracy prior to printing or scanning.



exceptional, solid performance

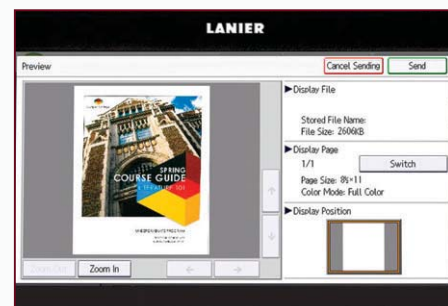
Print with power, consistently

The Lanier MP2553SP/MP3353SP keeps pace with your entire workgroup's busy demands without compromising speed or performance. Featuring a powerful 600 MHz processor, up to 1.5 GB RAM and a 250 GB HDD, it integrates seamlessly in almost any environment — including Windows, Macintosh, Citrix, SAP, UNIX, AS/400 and more. Its icon-driven, one-click preset PCL6 user interface driver simplifies print jobs for crisp output at up to 600 dpi. Advanced administrative controls allow you to set quotas and limit output for specific users or workgroups. As a result, you actively reduce operating costs while encouraging more environmental awareness for long-term, sustainable savings.



Scan with convenience, quickly

Share critical information efficiently with easy-to-use advanced scanning capabilities. Scan in black-and-white or colour in PDF, TIFF or JPEG formats. Then share them immediately via Scan-to-File/Folder/URL/FTP/Email functionality. Compress file sizes for more complex scans and send them easily without compromising image quality. Distributed Scan Management (DSM) offers centralised scanning that automates many tasks while following specific preferences, permissions and rules that expedite delivery.



Manage more tasks, efficiently

Looking to improve productivity? Spend less time looking for documents. The Lanier MP2553SP/MP3353SP offers optional embedded OCR, so users can retrieve documents quickly by searching for specific words in PDF text in up to 14 languages. This convenient feature can also detect blank pages in large jobs and remove them automatically to reduce waste.



we've made it easy to take control

Impressive performance on display

Lanier's optional 10.1" Wide Super VGA Smart Operation Panel offers the functionality and performance of today's smartphones and tablets. Featuring drag-and-drop, pinch-and-flick functionality and swipe scrolling, it allows users to quickly move from one task to the next with unprecedented ease. It even includes convenient widgets for quick updates on the date, time and toner levels.



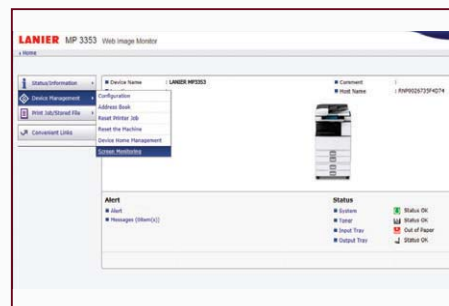
Simplicity at its best

Lanier's new Quick User Interface feature from the optional Smart Operation Panel simplifies the choices for the most frequently used functions for Copy, Scanner and Fax. They can be used with intuitive touch gestures, such as flicking to select addresses, and pinching to zoom in or pan out on a preview. For workgroups requiring enhanced feature functionality, it is easy to switch between the Quick User Interface functions and Lanier's traditional user interface. Plus the new panel also offers advanced Web Browser functionality on par with today's mobile devices.



Centralised administrative controls

Optimal performance is at your fingertips. Manage, monitor and troubleshoot your entire Lanier fleet from the desktop. With Web Image Monitor, IT and technicians can take advantage of a remote user interface to view the MFP's operational panel. Use a Web browser to access system settings and address books. Receive email alerts and real-time updates when supplies are low. And, use Lanier @Remote to automate meter reads, service event notifications and low toner alerts to improve day-to-day efficiency, including firmware updates.



smart, secure document management

Protect sensitive information

How vulnerable is your organisation's data? Security breaches can compromise critical information at any time and they are expensive and time-consuming to resolve. Lanier offers a number of security technologies to help protect your information at every level. The Lanier MP2553SP/MP3353SP includes user authentication to help prevent unauthorised access to key functions and proprietary information. Documents are stored at the MFP, and are released only after authorised users authenticate at the device with a user log-in name and password or with an ID card that's swiped at the optional card reader. The device also overwrites data on the hard drive automatically and offers encryption protection to help protect against hackers.



Fast, affordable paperless faxing

Manage fax workflow quickly and conveniently. Send or receive faxes electronically with Internet Faxing. Or, use LAN faxing to transmit directly from a PC. Super G3 faxing is available as well for quick delivery to conventional fax numbers. With the Remote Fax Option, users can send and receive fax documents from any connected device in your fleet – even those without fax options – by sending it through the Lanier MP2553SP/MP3353SP. This minimises phone line costs and additional fax boards.



Encourage environmental stewardship

We're committed to sustainable, energy-efficient operations. That's why we designed the Lanier MP2553SP/MP3353SP to use less power. With one of the lowest typical electricity consumption (TEC) values in the industry, it easily meets all new ENERGY STAR v2.0 criteria. Organisations can also program the device to power on or off during specified downtimes, including during weekends or lunch, to conserve even more energy.



all-in-one performance for fast-paced offices



Lanier MP3353SP shown with optional 1 Bin Tray, Two Tray Paper Bank and 1,000-Sheet Booklet Finisher.

- 1** Navigate from job to job easily via the full-colour, 9" tiltable LCD control panel featuring a USB/ SD card slot and a customisable home screen to link to commonly performed jobs.
- 2** Use the standard 100-sheet Automatic Reversing Document Feeder (ARDF) to efficiently handle one- and two-sided originals for copying, scanning and faxing.
- 3** The Lanier MP2553SP/MP3353SP comes standard with 1 x 500- and 1 x 550-sheet paper trays for longer, uninterrupted runs.
- 4** A standard 100-sheet bypass tray accommodates a wide range of paper sizes and types.
- 5** Use the optional 2 x 550-sheet paper trays (shown) for multiple paper sources on demand. Other options include a one-tray paper bank, 2,000-sheet large capacity tray and cabinet.
- 6** Produce compelling documents and minimise outsourcing. The optional 1,000-sheet Booklet Finisher (shown) provides three destinations for output, and can be used to produce paginated, saddle-stitched, punched and folded booklets. Design your own complete document production solution with other optional finishers including a 1,000-sheet Stapler Finisher and 500-sheet Internal Finisher.
- 7** The optional 100-sheet 1 Bin Tray can separate output and simplify document retrieval.

System Specifications

Engine/Copier Specifications

Scanning Element
Printing Process

One-Dimensional Solid Scanning Through CCD
Single Laser Beam Scanning & Electrophotographic Printing Dry, Dual Component
600 x 600 dpi
Up to 999
4.2 seconds
15 seconds
To 9.9 seconds

Toner
Copy Resolution
Quantity Indicator
First Copy Time
Warm-Up Time
Recovery Time
Print Ready
System Memory (std./max.)
Original Type
Maximum Original Size
Paper Type

1.5 GB RAM + 250 GB HDD
Book/Sheet/Object
Up to A3
Plain Paper, Transparencies, Letterhead, Colour Paper, Pre-Punched Paper, Labels, Envelopes, Cardstock, Recycled

Continuous Copying Speed

MP2553SP: 25 copies/minute (A4)
MP3353SP: 33 copies/minute (A4)

Power Source
TEC Value

220-240V/50-60Hz/7A
MP2553SP: 1,303 Wh (Print/Scan)
MP3353SP: 1,826 Wh (Print/Scan)

Standard Paper Capacity

500 sheets x 1 tray, 550 sheets x 1 tray, and 100-Sheet Bypass Tray

Maximum Paper Capacity
Supported Paper Sizes
Supported Paper Weights
Standard Output Tray Capacity
Maximum Output Capacity

3,150 sheets
A6 – A3
52 – 105 g/m² (Duplex)
52 – 157 g/m² (Tray 1, 2 and Bypass)
500 sheets
1,600 sheets (Bridge Unit + 1 Bin + 1,000-Sheet Finisher)

ARDF DF3090 (Standard)

Paper Size
Simplex Paper Weight
Stack Capacity
Standard Features

A5 – A3
40 – 128 g/m²
100 sheets
Auto Magnification, Auto Paper Select, Auto Tray Switch, Booklet/Magazine Copy, Center/Border Erase, Chapters, Combine Mode, Cover Insertion, Directional Magnification, Document Server (3,000 File Capacity), Duplex, Electronic/Rotate Sorting, Full-Color VGA Touch Screen Control Panel, ID Card Copy, 8 Job Presets, 25 Job Programs, Negative/Positive, OHP Slip Sheet, Sample Copy, Series Copy, Simple Screen, 1,000 User Codes, User Stamps
587 x 653 x 835 mm
75 kg

Dimensions (WxDxH)
Weight

Printer Specifications (Standard)

Print Speed

MP2553SP: 25 ppm
MP3353SP: 33 ppm
RM7035C 533 MHz

CPU

Standard Interfaces
Optional Interfaces

10Base-T/100/1000BaseTX Ethernet, USB 2.0
IEEE 802.11a/b/g/n Wireless LAN & IEEE 1284 Parallel

Memory Capacity
Network Protocol

Shared with Copier
TCP/IP (IPv4, IPv6), IPX/SPX*
Windows Vista/7/8/XP/Server 2003/ Server 2003R2/Server 2008/2008R2/Server 2012; Netware* 6.5 or later, Unix Filters for Sun Solaris, HP-UX, SCO OpenServer, Red Hat Linux, IBM AIX, Mac OS X 10.5 or later, SAP R/3, NDPS Gateway, IBM iSeries/AS/400® using OS/400 Host Print Transform, Citrix Presentation Server 4.5/Citrix Xen App 5.0, 6.0, 6.5
@Remote, SmartDeviceMonitor, Device Manager NX, Web SmartDeviceMonitor, Web Image Monitor

Network Operating Systems

Utilities

Page Description Languages

Standard PCL5e/6 & XPS, Optional Adobe PostScript 3®
Up to 600 dpi
45 Scalable Fonts, 13 International Fonts
136 PostScript Fonts
Sample/Locked/Hold/Stored Print

Print Resolution

Fonts for PCL5e/6

Fonts for PS3

Standard Features

*Requires optional SD Card for Netware

Scanner Specifications (Standard)

Scanning Speed B&W/Colour (A4)

Scanning Resolution

Scan Area

Standard Interfaces

Optional Interfaces

Protocol

Embedded Scanning: 80/80 ipm (@ 300 dpi)
600 dpi
Up to A3

10Base-T/100/1000BaseTX Ethernet

IEEE 802.11a/b/g/n Wireless LAN

TCP/IP, NCP*, SMB, SMTP, POP 3, LDAP, FTP, IMAP4

Shared with Copier

Single and Multi-Page TIFF/PDF, High

Compression PDF, PDF/A and Single-Page JPEG

Embedded Scan-to-Email/Folder/URL, TWAIN and Colour Scanning

Memory Capacity

File Types

Standard Features

*Requires optional SD Card for Netware

Fax Specifications (Option)

Fax Option Type M7

Circuit

Compatibility

Resolution

Compression Method

Scanning Speed

Modern Speed

Transmission Speed

PSTN, PBX

ITU-T G3

200 x 200/100 dpi, 400 x 400 dpi (optional)

MH, MR, MMR, JBIG

Less than 1 second (SEF)

33.6 Kbps with Auto Fallback

G3: 3 seconds per page (MMR Compression)

G3: 2 seconds per page (JBIG Compression)

4 MB standard/28 MB maximum

320 pages/2,240 pages

2,000

100 (max. 500 numbers per group)

Dual Access, Duplex Reception, Image Rotation,

1 Hour Backup, LAN-Fax Capability, Internet Faxing (T.37), IP Faxing (T.38), Fax Forwarding to

E-Mail/HDD/Folder

Simultaneous Operation of up to 3 lines (G3 x 3)

SAF Memory

Max Auto Dials

Group Dials

Standard Features

Optional Features

Security Features (Standard)

DOSS, HDD Encryption, S/MIME, IPsec Communication, Locked Print Password Encryption, Address Book Encryption, SSL, User Authentication, Quota Setting/Account Limit, SNMP v3, SMTP over SSL and PDF encryption

Hardware Accessories

PB3180 Paper Feed Unit (Option)

Paper Size
Paper Weight
Paper Capacity
Dimensions (WxDxH)

A5 – A3
52 – 157 g/m²
2 x 550 sheets
580 x 627 x 260 mm

PB3190 Large Capacity Tray (Option)

Paper Size
Paper Weight
Paper Capacity
Dimensions (WxDxH)

A4
52 – 157 g/m²
2,000 sheets (1,000 x 2)
580 x 627 x 260 mm

Internal Shift-Sort Tray (SH3050)

Tray Capacity
Paper Size
Paper Weight

250 sheets A5 – A4
125 sheets B4 – A3
A6 – A3
52 – 157 g/m²

Cannot be installed with any Finisher

One-Bin Tray BN3090 (Option)

Paper Size
Paper Weight
Paper Capacity

A5 – A3
60 – 105 g/m²
100 sheets

500-Sheet Internal Finisher Type 3352

Paper Size
Paper Weight
Stack Capacity

A6 – A3
52 – 157 g/m²
500 Sheets

Staple Capacity

250 Sheets

Staple Position

1 staple (2 positions), 2 staples (1 position)

Dimensions (WxDxH)

495 x 477 x 161 mm

Hole Punch Unit (PU3020)

(Optional; Installs inside Internal Finisher Type 3352)

1,000-Sheet Finisher (SR3140)

Paper Size
Paper Weight
Stack Capacity
Staple Capacity
Staple Paper Size
Staple Paper Weight
Staple Positions
Dimensions (WxDxH)

Proof Tray: A6 – A3
Shift Tray: A6 – A3
Proof Tray: 152 – 157 g/m²
Shift Tray: 52 – 157 g/m²
Proof Tray: 250 sheets A4, 50 sheets B4
Shift Tray: 1,000 sheets A4, 500 sheets B4
50 sheets A4, 30 sheets B4
A4 – A3
152 – 105 g/m²
Top, Bottom 2 Staples
646 x 620 x 960 mm

1,000-Sheet Booklet Finisher (SR3150)

Paper Size
Paper Weight
Stack Capacity
Staple Capacity
Staple Paper Size
Staple Paper Weight
Staple Positions
Dimensions (WxDxH)

Proof Tray: A6 – A3, Shift Tray: A6 – A3,
Booklet Tray: A4 – A3
Proof Tray: 52 – 157 g/m²,
Shift Tray: 52 – 157 g/m²
Booklet Tray: 52 – 105 g/m²
Proof Tray: 250 sheets A4, 50 sheets B4 – A3,
Shift Tray: 1,000 sheets A4, 500 sheets B4 – A3,
Booklet Tray: 20 Sets (2 – 5 sheets), 10 Sets
(6 – 10 sheets) & 7 Sets (11 – 15 sheets)
Normal Staple: 50 sheets A4, 30 sheets
B4 – A3 Saddle, Stitch: 15 sheets
Normal Staple: A4 – A3, Saddle Stitch: A4 – A3
152 – 105 g/m²
Top, Bottom, 2 Staples, Booklet
646 x 620 x 960 mm

Hole Punch Unit (PU3050)

(Optional; Installs inside SR3150 or SR3140 Finishers)

Additional Accessories

Browser Unit Type M7, Card Reader Bracket Type 3352, Copy Data Security Unit Type G, Fax Connection Unit Type M7, Fax Option Type M7, File Format Converter Type E, G3 Interface Unit Type M7, IEEE 1284 Interface Board Type A, IEEE 802.11a/g/n Interface Unit Type M2, Key Counter Bracket Type H, Memory Unit Type B 32MB, OCR Unit Type M2, Optional Counter Interface Unit Type A, PostScript3 Unit Type M7, Punch Kit PU3020, SD card for NetWare printing Type M7, Smart Card Reader Built-in Unit Type M7, Smart Operation Panel Type M3.

LANIER

Copywell Australia Pty Ltd

24/2-4 Damian Court Dandenong Vic

3175 Ph: (03) 9793 7773

Email: sales@copywell.com.au

www.copywell.com.au